

Berry Springs Nature Park



Fact Sheet

Berry Springs Nature Park protects a large part of the Berry Creek catchment. Berry Creek starts from a number of springs, forms a small creek, then reaches Darwin Harbour through a mangrove lined estuary. The Park provides an attractive area close to Darwin for recreational activities, and also provides a refreshing swimming spot after a day at the Territory Wildlife Park.

If you swim with goggles you can see many small native fish and other aquatic life that live in the clear pools.

Access (see map)


Turn west off the Stuart Highway about 47 km south of Darwin. The Park is 10 km along the Cox Peninsula Road.


When to Visit

The Park is open from 8.00 am to 6.30 pm daily. Group functions require a permit.

If you are interested in plants, visit the Park during March and April when many of the native plants are in flower and the grasses are still green.

What to See and Do

 **Visit the interpretive display** - it provides a brief description of the area including some historical references, photographs and information on wildlife.

 **Picnicking** - lots of shady picnic areas with tables and barbecues. Wood is provided.



Swimming - The cool clear water is refreshing in the shady pools along Berry Creek. There are steps for easy access. Bring your mask and snorkel to look at the underwater world. Take care and observe the safety signs.



No Swimming - the pools may be temporarily closed in the wet season (October - April) when conditions are considered unsafe



Monsoon Rainforest and Woodlands Walk - a lovely loop walking track takes you through two of the Top End's habitats. It starts from the picnic area. Take binoculars if you are keen on bird watching.



Kiosk is open from 11am - 5.30pm daily from April - November.

History

During WWII, Berry Springs was part of a Rest and Recreation Camp set up by the armed forces for the 100 000 personnel based in the area. A number of huts and a weir were built at Berry Springs during this time. You can still see their remains around the main pool. Berry Springs continues to be popular with locals and tourists as a place for rest and recreation.

Visit the Territory Wildlife Park

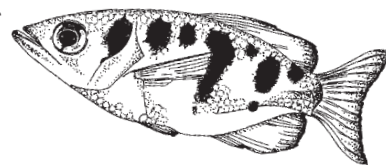
It's 1 km further west along the Cox Peninsula Road.

Safety and Comfort

- Observe park safety signs.
- Swim only where recommended, observe warning signs.
- Wear a shady hat, sunscreen and insect repellent.
- Please don't take glass near the pools, breakages are a safety hazard.
- Beware of theft, lock vehicles and secure valuables.

Please Remember

- Put your rubbish in the bin or take it away with you.
- Keep to designated roads, tracks and parking areas.
- All cultural items and wildlife are protected.
- Pets are not permitted in this Park.
- Nets, traps and firearms are not permitted.
- Fishing is not permitted in this Park.
- Take care with fire, light fires only in fireplaces provided.
- Use wood provided sparingly.
- Camping is not permitted.
- Check that your vehicle is not transporting pests like weeds and Cane Toads.



Common Archerfish
Toxotes chatareus

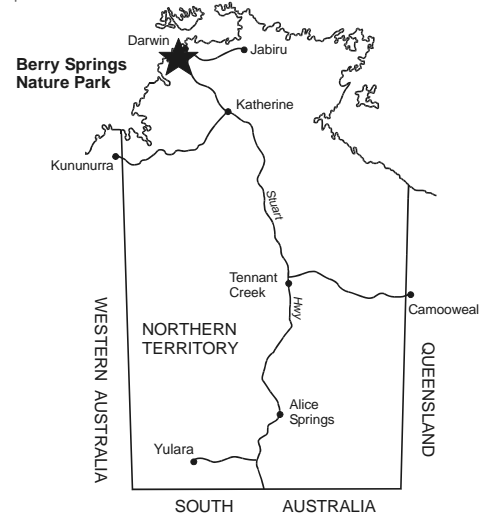
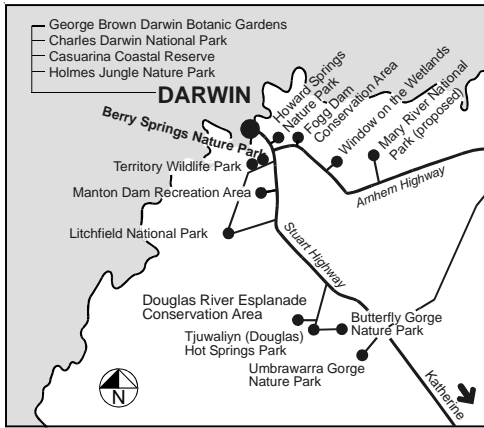
Parks & Wildlife Commission of the Northern Territory

Berry Springs Park Office Head Office - Goyder Centre
Ph: (08) 8988 6310 25 Chung Wah Tce PALMERSTON NT 0830
Fax: (08) 8988 6485 PO Box 496 PALMERSTON NT 0831
www.nt.gov.au/nreta/parks Ph: (08) 8999 4555



Berry Springs Nature Park

Fact Sheet



LEGEND

